



ahwatukee  
FORTY8

# FOR LEASE

*Office/Flex/Medical*

15905 - 15915 S. 46th St.  
15920 - 15930 S. 48th St.  
Phoenix, AZ 85048





ahwatukee  
FORTY8



# LOCATED NEAR MANY AMENITIES

Including



ahipoki bowl



SPROUTS  
FARMERS MARKET



DUNKIN'



SUBWAY



TRADER JOE'S

ARRIBA  
MEXICAN GRILL





# PROPERTY *Highlights*

Boasting a prime location with access to I-10 and the Loop 202, Ahwatukee 48 is surrounded by numerous amenities at 15905 S. 46th Street & 15920 S. 48th Street in Phoenix. Freeway access to the office/flex/medical space is available via Chandler Boulevard. Ahwatukee 48 is in close proximity to exciting retail and dining experiences including: Arriba Mexican Grill, VaBene, Spinato's Pizzeria, RA Sushi, AMC Ahwatukee 24, LA Fitness, Trader Joe's and Sprouts. Ahwatukee 48 is ±15 minutes from Sky Harbor International Airport, ±28 minutes from Phoenix/Mesa Gateway Airport and ±15 minutes from Downtown Tempe.

PARKING  
4.25/1000



AMENITIES  
ample nearby



CLOSE PROXIMITY  
to I-10 (±2 minutes)



MONUMENT  
sign available





ahwatukee  
FORTY8

# FOR LEASE

Industrial | Flex

## 15905 S. 46th St

Suite 110: ±3,421 RSF\*

Suite 120-130: ±4,000 - 12,000 RSF\*

Suite 150: ±3,843 RSF\*

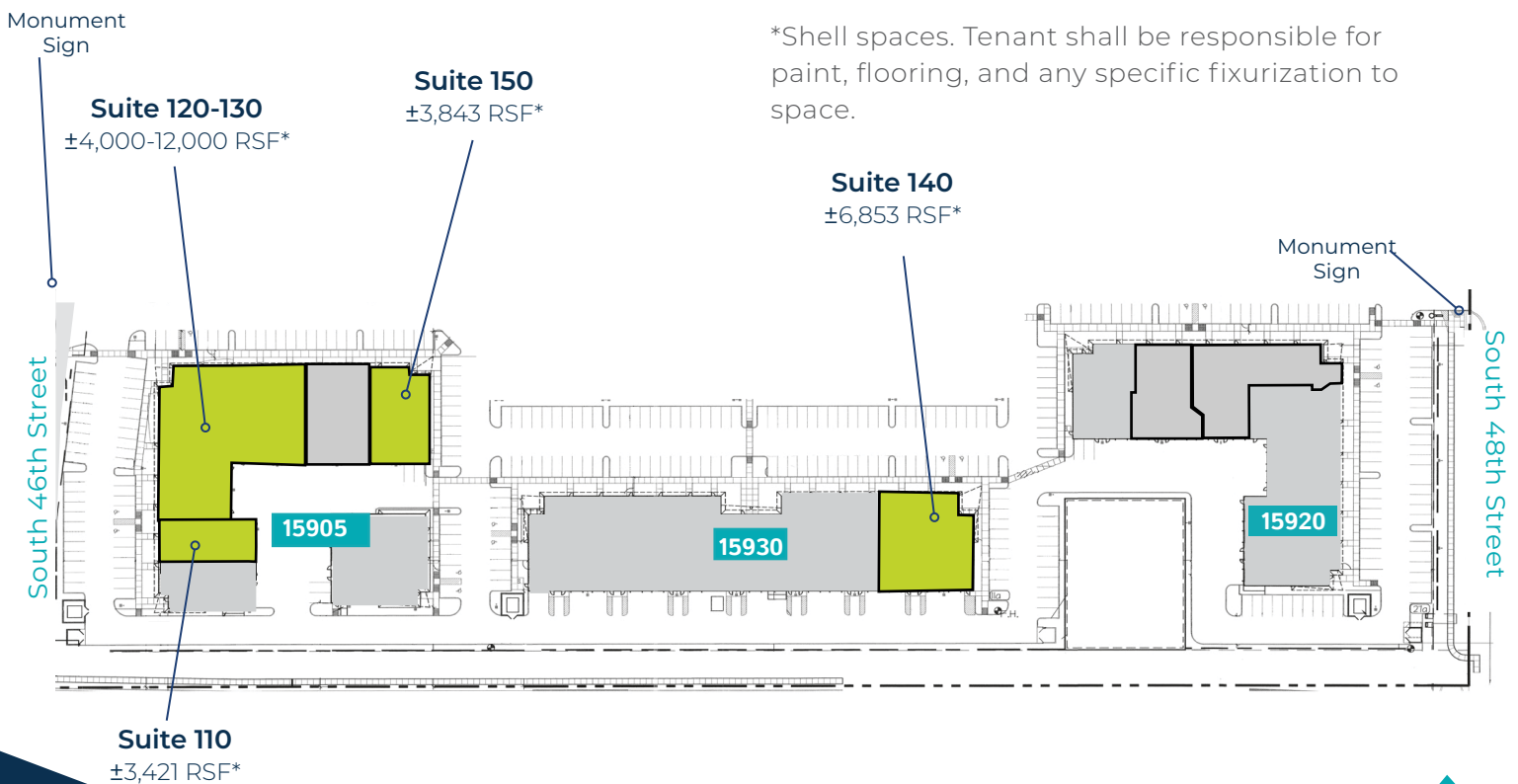
## 15930 S. 46th St

Suite 40: ±6,853 RSF\*

Starting at \$16.00/SF NNN with  
minimum 5 year lease

(NNN Expenses: \$4.63 p.s.f.)

\*Shell spaces. Tenant shall be responsible for  
paint, flooring, and any specific fixurization to  
space.



**Keri Scott**  
DIR +1 602 386 7153  
keri.scott@colliers.com

**Alex Kas-Marogi**  
DIR +1 248 881 6376  
alex.kas-marogi@colliers.com

**Emily Currie**  
DIR +1 480 721 4889  
emily.currie@colliers.com



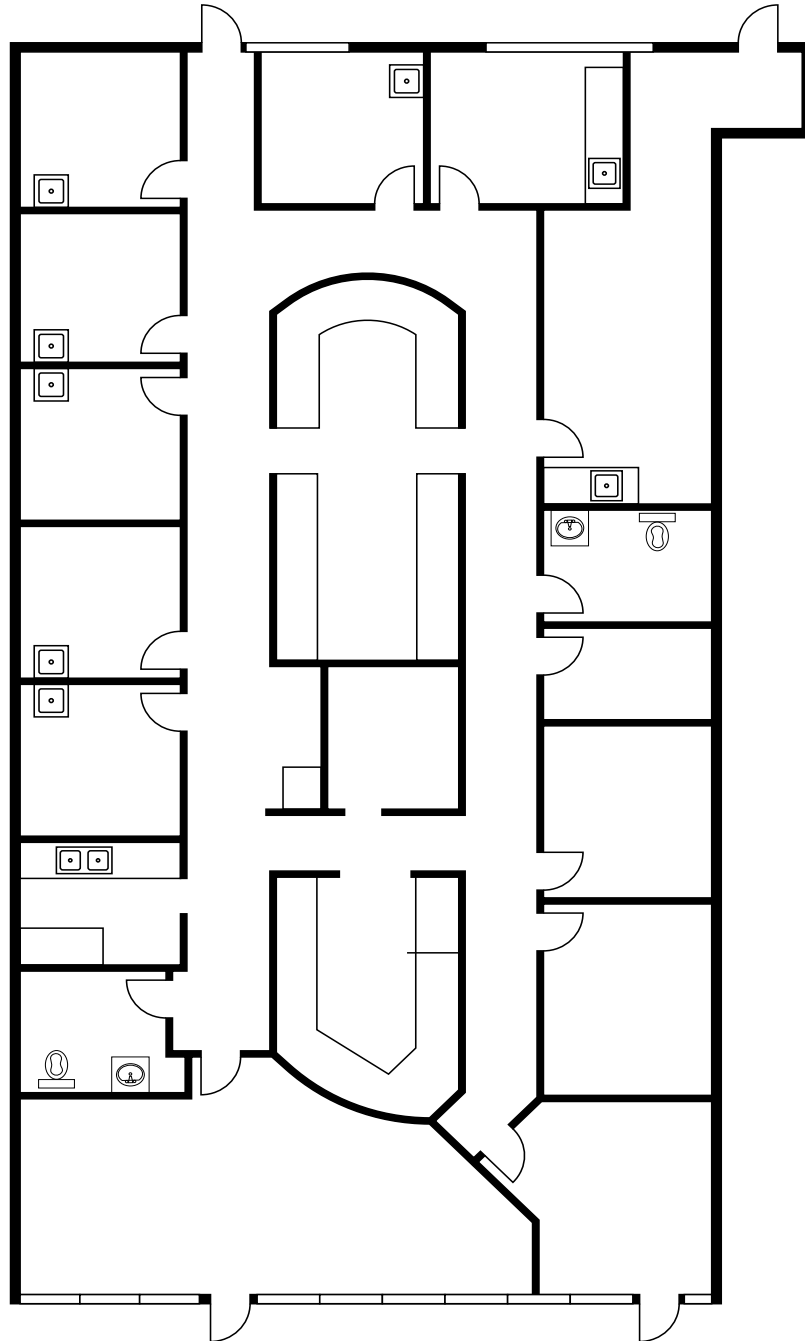
ahwatukee  
FORTY8

# 15905 S 46th Street Suite 110

*Shell Space\**

*±3,421 RSF Industrial/Flex*

\*Shell space. Tenant shall be responsible for paint, flooring, and any specific fixurization to space.



**Keri Scott**  
DIR +1 602 386 7153  
keri.scott@colliers.com

**Alex Kas-Marogi**  
DIR +1 248 881 6376  
alex.kas-marogi@colliers.com

**Emily Currie**  
DIR +1 480 721 4889  
emily.currie@colliers.com



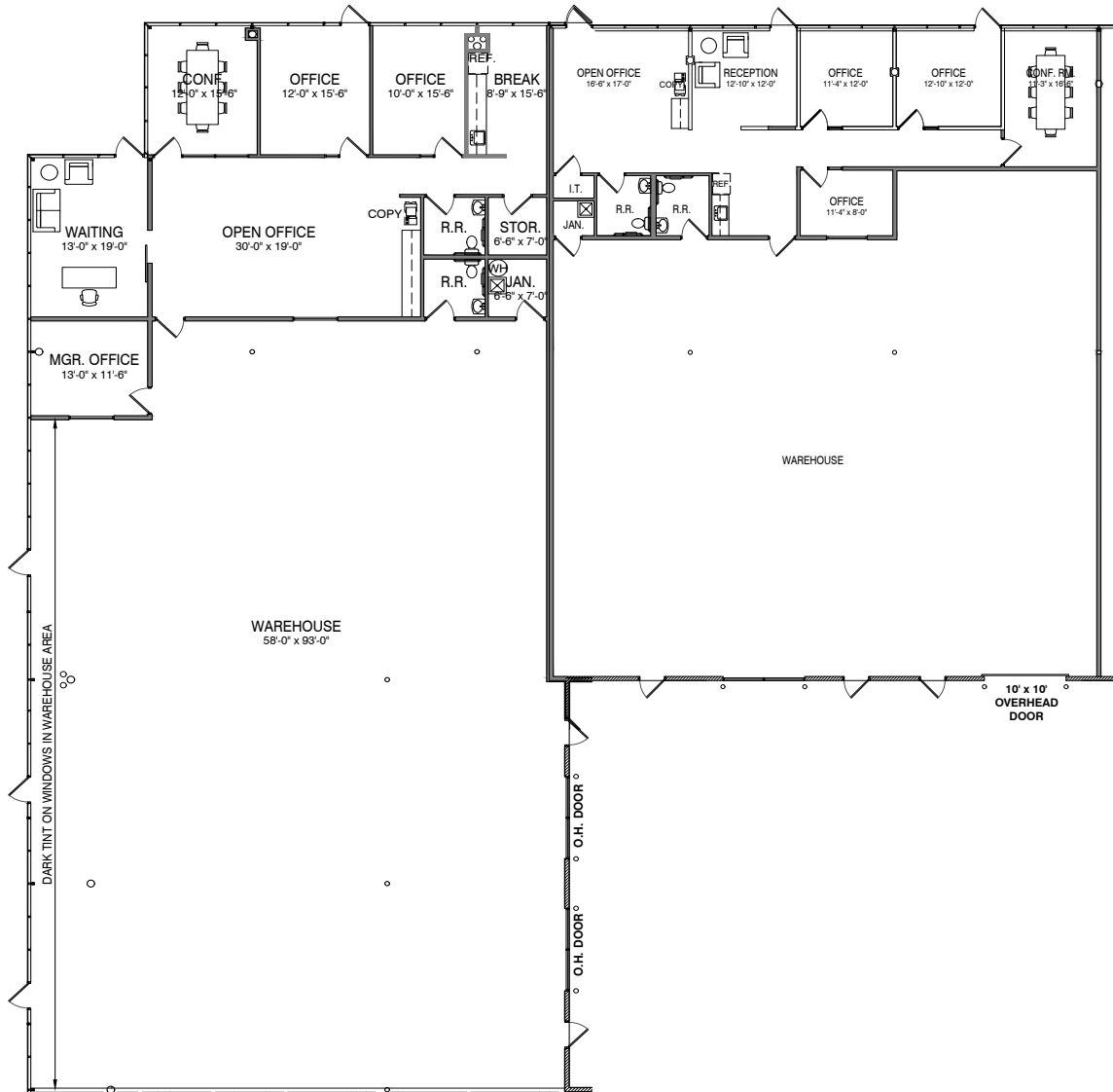
ahwatukee  
FORTY8

# 15905 S 46th Street Suite 120-130

Shell Space\*

±4,000 - 12,000RSF Industrial/Flex

\*Shell space. Tenant shall be responsible for paint, flooring, and any specific fixurization to space.



Keri Scott  
DIR +1 602 386 7153  
keri.scott@colliers.com

Alex Kas-Marogi  
DIR +1 248 881 6376  
alex.kas-marogi@colliers.com

Emily Currie  
DIR +1 480 721 4889  
emily.currie@colliers.com



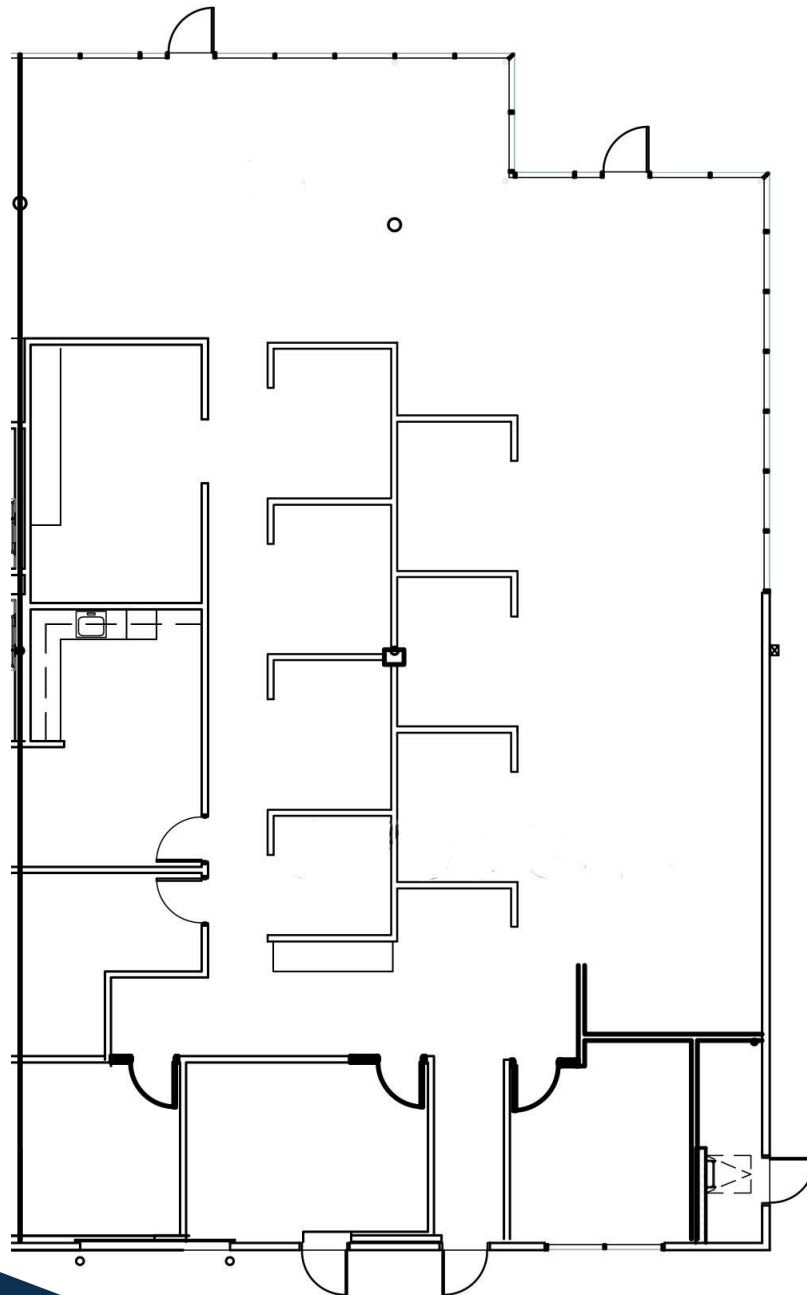
ahwatukee  
FORTY8

# 15905 S 46th Street Suite 150

*Shell Space\**

*±3,843 RSF Industrial/Flex*

\*Shell space. Tenant shall be responsible for paint, flooring, and any specific fixurization to space.



**Keri Scott**  
DIR +1 602 386 7153  
keri.scott@colliers.com

**Alex Kas-Marogi**  
DIR +1 248 881 6376  
alex.kas-marogi@colliers.com

**Emily Currie**  
DIR +1 480 721 4889  
emily.currie@colliers.com



ahwatukee  
FORTY8

15930 S 46th Street  
Suite 140  
±6,853 RSF Industrial/Flex



**Keri Scott**  
DIR +1 602 386 7153  
keri.scott@colliers.com

**Alex Kas-Marogi**  
DIR +1 248 881 6376  
alex.kas-marogi@colliers.com

**Emily Currie**  
DIR +1 480 721 4889  
emily.currie@colliers.com

[Click Here](#)



Virtual Tour



ahwatukee  
FORTY8

GET IN  
touch

OFFICE/MEDICAL

Emily Currie

DIR +1 602 222 5043

MOB +1 480 721 4889

emily.currie@colliers.com

INDUSTRIAL

Keri Scott

DIR +1 602 222 5116

MOB +1 602 386 7153

keri.scott@colliers.com

Alex Kas-Marogi

DIR +1 602 222 5091

MOB +1 248 881 6376

alex.kas-marogi@colliers.com

Colliers

2390 E. Camelback Rd., Suite 100

Phoenix, AZ 85016

Main: +1 602 222 5000

colliers.com/arizona



AHWATUKEE 48

LINTEC OF AMERICA

FMC  
AHWATUKEE DIALYSIS

IRONWOOD  
UROLOGY

15905 | 46  
15915 | STREET

15920 | 48  
15930 | STREET

Copyright © 2024 Colliers International. Information herein has been obtained from sources deemed reliable, however its accuracy cannot be guaranteed. The user is required to conduct their own due diligence and verification.